

Logmein installation routine...

Cambrig Computers
IT Consultants

tel: 01943 468442
fax: 08700 468442
mob: 0777 588 4233

[home](#)

Install Logmein

[Logmein installation instructions](#)
(opens a PDF file in a new window)

Only to be used by clients of Cambrig Computers

LogMeIn Simply Connected™

Sales: 1-866-478-1805 | Support: 1-800-993-1790 | English (US)

Solutions | Products | About Us | Support | Contact | Labs & Betas | Login

Welcome to the LogMeIn Installer

This will install LogMeIn onto your computer. The person who sent you this link will be able to access your computer.*

LogMeIn is a secure remote access system that allows your trusted IT support professional to provide technical assistance by remote controlling your computer over the Internet.

Please enter a description for your computer.
(e.g. for example: John Doe's Desktop PC, Sally Brown's laptop)

I have received this link from a trusted source.

[Continue](#)

LogMeIn Simply Connected™

Sales: 1-866-478-1805 | Support: 1-800-993-1790 | English (US)

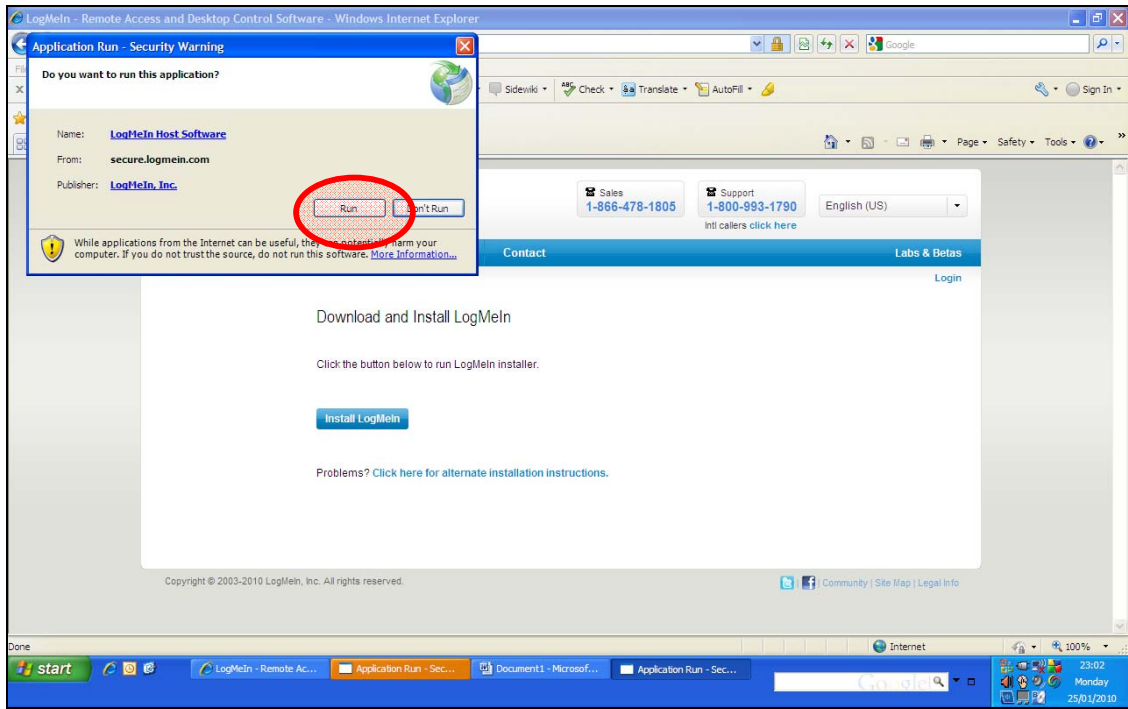
Solutions | Products | About Us | Support | Contact | Labs & Betas | Login

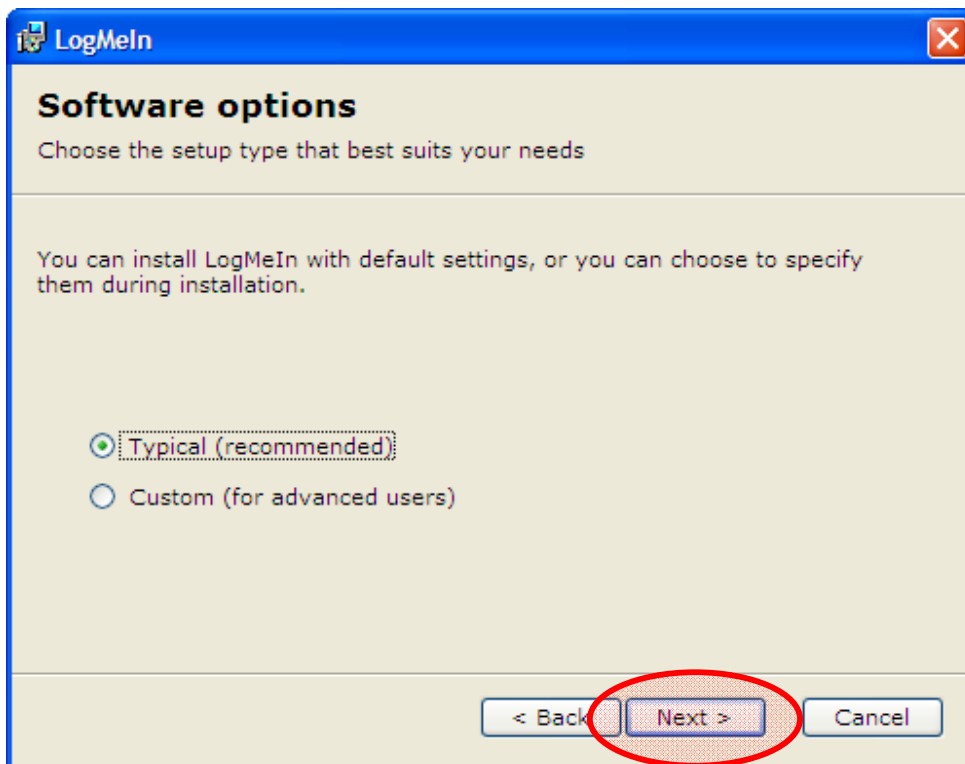
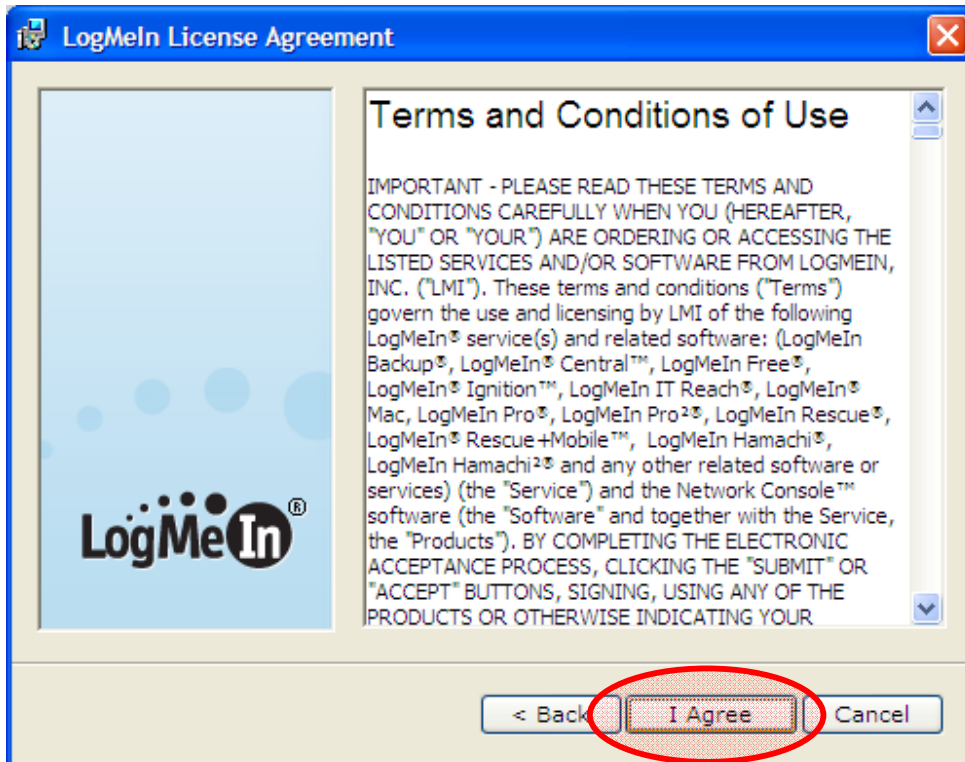
Download and Install LogMeIn

Click the button below to run LogMeIn installer.

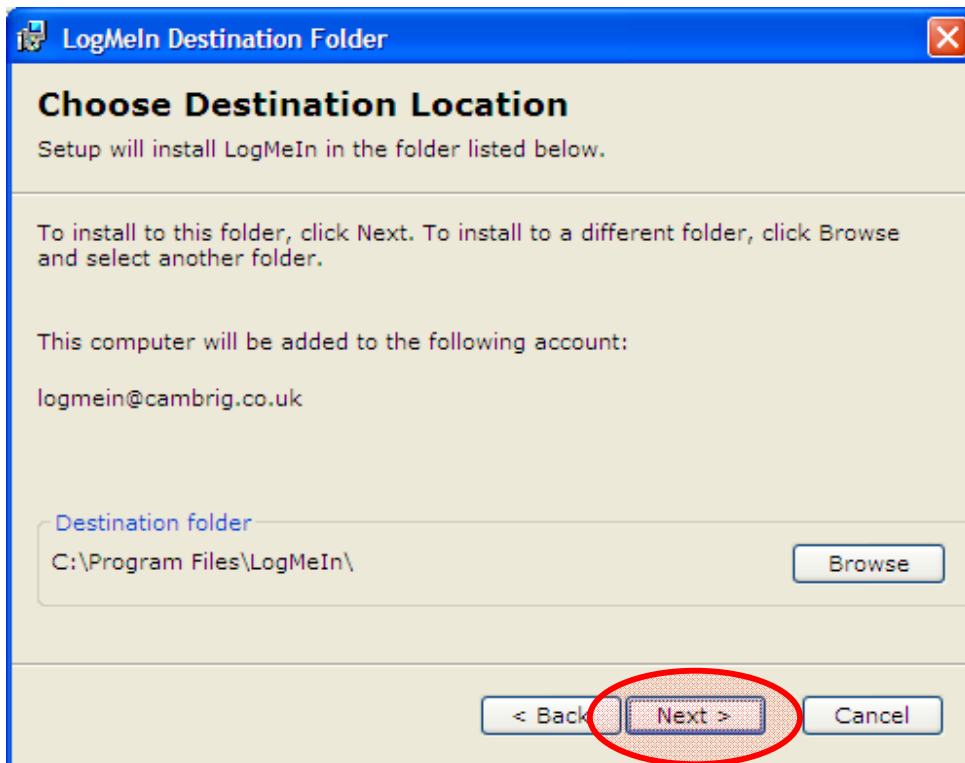
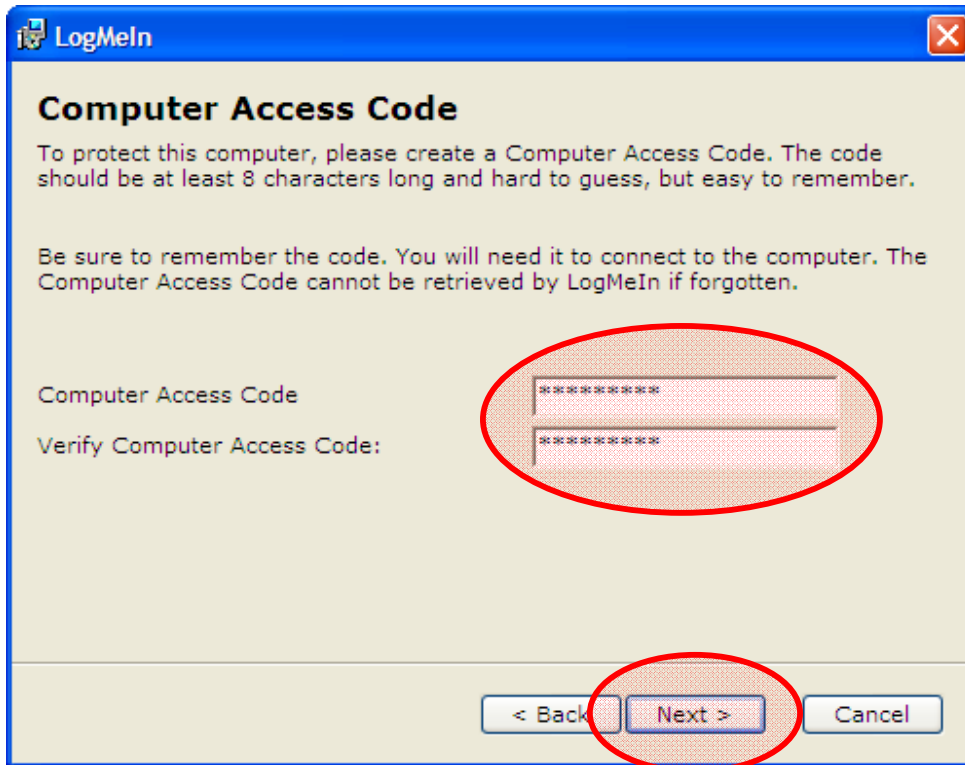
Install LogMeIn

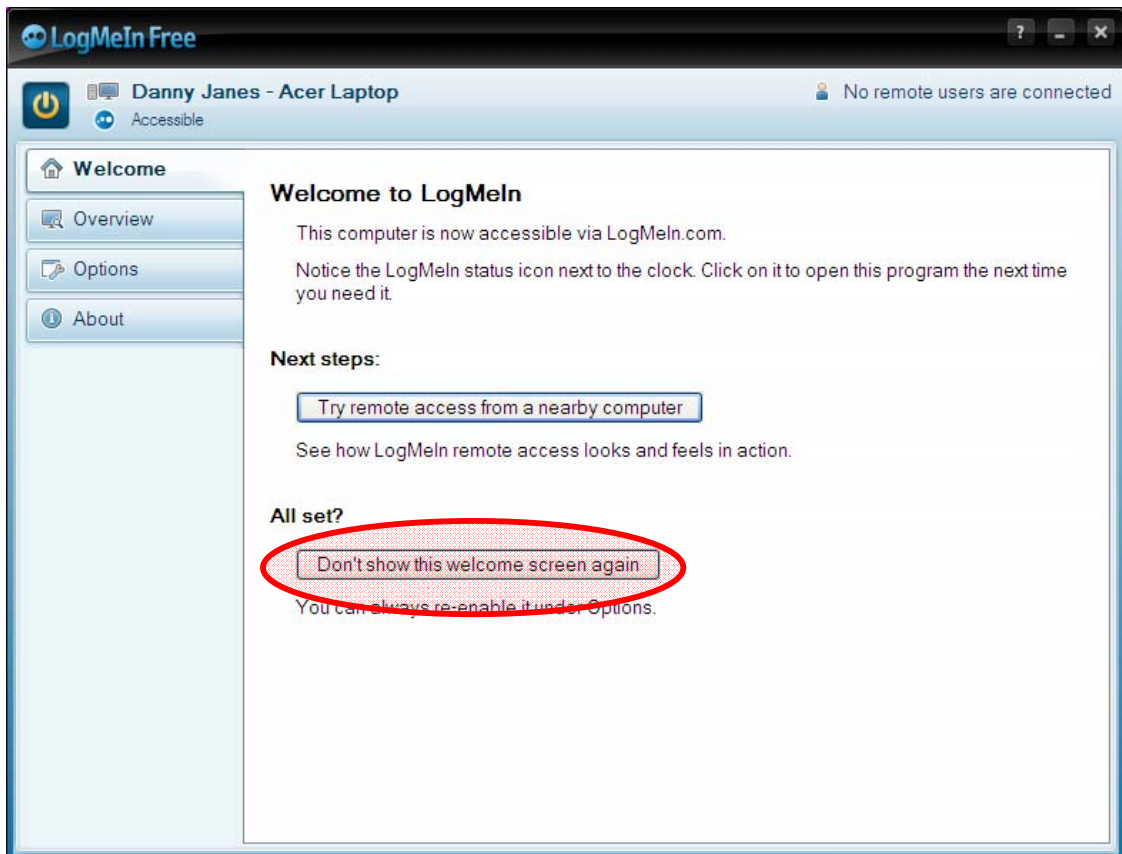
Problems? [Click here for alternate installation instructions.](#)





Depending on the way you logon to your computer you may be asked to enter a Computer Access Code, if so, please enter "qwerty987", this will be changed the first time we remote onto your computer.





Logmein is now installed on your computer and will be visible on our master control panel